



IF IN DOUBT ASK
DO NOT SCALE

A

B

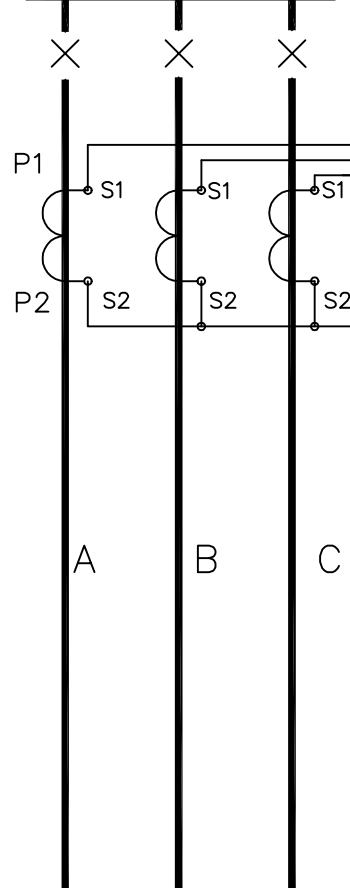
C

D

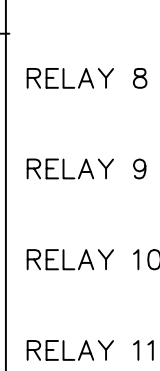
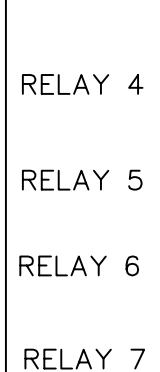
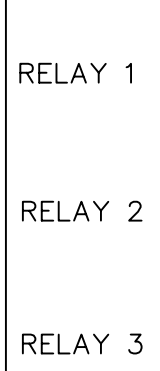
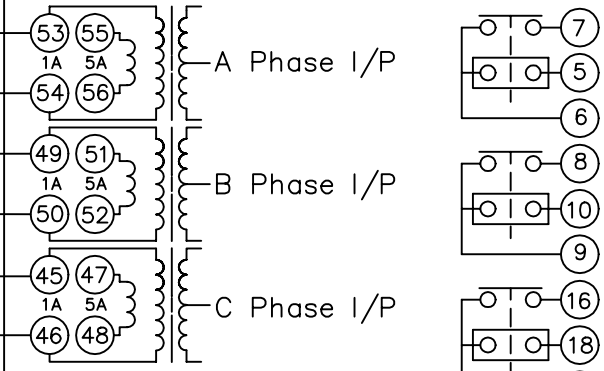
E

F

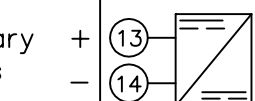
BUSBARS



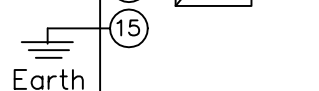
DCD31xB R6 Case Size



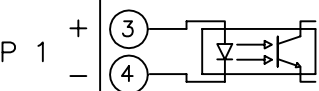
EXPANSION PCB



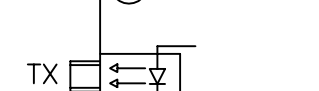
D.C. Auxilliary
Input Volts



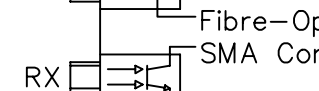
STATUS I/P 1



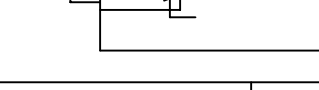
+ STATUS I/P 5
- STATUS I/P 5



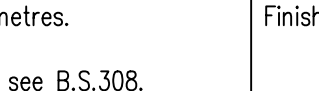
+ STATUS I/P 4
- STATUS I/P 4



+ STATUS I/P 3
- STATUS I/P 3



+ STATUS I/P 2
- STATUS I/P 2



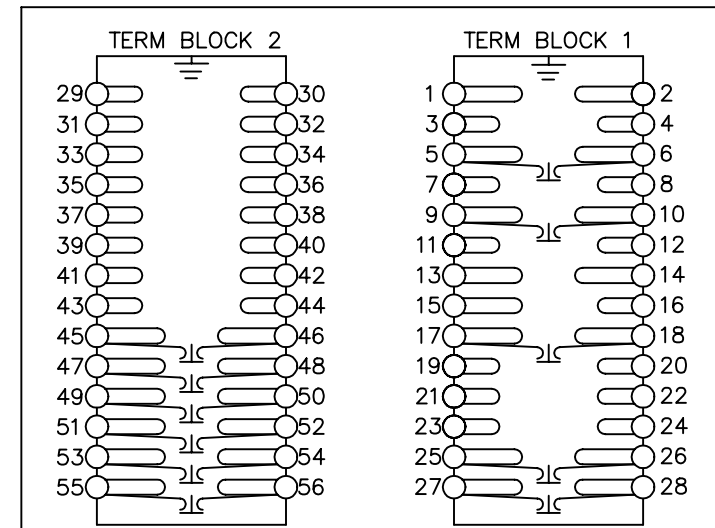
Fibre-Optic
SMA Connectors

**NOT SUBJECT TO UPDATE
ONCE COPIED / PRINTED
OR DOWNLOADED**

NOTES

- 1 CT CIRCUITS ARE SHOWN CONNECTED TO RELAY 1 AMP TAP. USE ALTERNATIVE TAP FOR 5AMP RATED CTs.
- 2 CT & EARTH CONNECTIONS ARE TYPICAL ONLY.
- 3 FOR TERMINAL DIAGRAM SEE 2434W20001 (A2)
- 4 DRG SHOWS OPTION A (7 O/P. 1 I/P)
DRG SHOWS OPTION B (11 O/P. 5 I/P).

TERMINAL BLOCKS VIEWED FROM REAR



KEY

- 1 Short Terminals
- 2 Long Terminals
- 3 CT Shorting Links

MATERIAL:

Dimensions in millimetres : Surface texture in micrometres.
Machine where marked ✓
For explanation of dimensions, tolerances, notes etc. see B.S.308.
Limit on untoleranced unmachined dimensions ± _____
Limits on untoleranced machined dimensions to B.S.4500;
i.e. up to 6±0.1; over 30 to 120±0.3; over 315±0.8;
over 6 to 30±0.2; over 120 to 315±0.5;
General unmachined angular tolerance ± _____

Finish:

Treatment:

Title:
TYPICAL SCHEMATIC DIAGRAM FOR 3 PHASE
DCD OVERCURRENT RELAY

**Reyrolle Protection
Hebburn.**

Original Scale.
NTS

First used on:

Similar Articles: 2434W10031

Supersedes:

Drq. No.
2434W10017

3	20/10/97	MN434/103
2	12/11/96	MN434/42
1	21/10/96	CHANGE NOTED

DRAWN M LEASK	CHECKED	APPROVED R.D.WATSON	DATE 23/07/02	IE	OPS	PCP	Purch.Spec. TQ	EAC	CE	STD	A3
---------------	---------	---------------------	---------------	----	-----	-----	----------------	-----	----	-----	----